

Razorlink & Razorlink Hub

Razorlink Hub is a compact field unit that bonds and optimises Cellular, Satellite & Wi-Fi Networks. It provides a fast, highly resilient and secure Internet connection for the rapid delivery of live, interactive or file-based media to your Cloud from the latest broadcast cameras, smart phones, and encoders.

Live Feeds

Broadcast cameras with built-in encoders can be combined with Razorlink Hub to offer a highly cost effective professional live solution, delivering content to the control room or cloud service. Similarly, SilverBlade II can deliver high speed Internet access necessary for 4K 360° cameras to stream to social media and provide higher quality more robust interactive content from applications like Skype and FaceTime.

File Based Workflows

The RazorLink technology built into Razorlink accelerates file transfer applications, fully utilizing the bandwidth over a single or bonded connection. This is achieved by overcoming the limitations of TCP over poor quality or long distance networks. This works with the built in FTP clients found in some cameras or widely used applications running on laptops and smartphones.

*Subject to underlying network speeds

Data and Network Security

RazorLink Technology is designed to provide transparent operation to applications with a simple highly focussed firewall policy lowering the attack surface. RazorLink offers up to AES 256 data encryption across networks, providing the security benefits of VPN based technology without the performance penalty.



Features

- Compact lightweight hardware
- Internet access from the field at over 100 Mbps*
- Cost effective - No Subscription or Airtime lock-in
- Rapid Deployment and Simple Configuration
- 12VDC input power – Operates from batteries, vehicles or mains
- Hybrid WAN – Bond DSL, Wi-Fi, Cellular and Satellite
- WAN Optimisation – Full utilisation of available bandwidth
- Network Resilience – Sophisticated Error correction delivers robust streaming
- Low Latency – Automatically selects best performing networks
- Transparent operation and Workflow agnostic
- Flexible - On premises or Cloud endpoints

On Premise or in the Cloud

RazorLink Smart Networking solutions have two endpoints, the Client and the Terminator (RazorLink receiver). The RazorLink Terminator software can be deployed on premises or in a Private or Public cloud.

Razorlink & Razorlink Hub

Razorlink Aware Applications

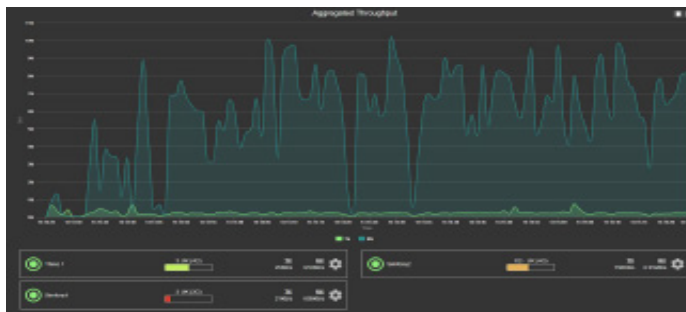
“RazorLink Aware” applications can take advantage of additional features such as QoS specification and error correction profiles. Access to network performance statistics from RazorLink, such as available bandwidth means an application can rapidly adapt to network conditions, offering the lowest possible latency whilst maintaining the highest quality video.

Razorlink User Interface

The user interface can be accessed from a web browser via a smartphone, tablet or laptop. The interface provides a graphical view of network performance and allows configuration of modems and operating parameters.

Cost Control

- No Subscriptions costs
- No Airtime lock-in
- Fast access to the Internet from office or field
- Full utilisation of existing networks
- Accelerates and secures standard applications
- Scalable Cloud or On-Premise operation



Hub Specifications

Input Voltage	12 V. Passively cooled.
Operating Temperature	0 - 40 degrees
Processor	Intel Celeron® N3350
Memory	4GB DDR4 SO-DIMM
Internal WiFi	(2.4 / 5GHz) - 802.11a/b/g/n
1 x Internal 4G cellular modem (Cat6). 4G / LTE Bands: B1-B5, B7, B12-B13, B20, B25-B26, B29-B30, B41, HSPA+/UMTS Bands: B1-B5, B8	
Support for 3 external USB cellular modems	
High gain external Wi-Fi and cellular antenna	
Front I/O:	2 USB 3.0 ports, 2 mini-DisplayPort, 2Db LAN
Side I/O:	1 MicroSD card slot, 1 Power button, 1 Power. Indicator LED, 1 COM port (RS232), 1 USB 2.0 port, 1DC. Input jack (12 V)
Mounting Options	DIN, VESA & Wall mountable
Size	115mm x 82mm x 34mm.
Weight	408g
Regulatory Information	2002/96/EC (WEEE Directive), 2011/65/EU (RoHS 2 Directive)
Warranty and Support	1 Year